

EXPRESSION OF INTEREST

ARCHITECTURAL &
ENGINEERING SERVICES
FOR CULTURE CENTER
ROOF REPLACEMENT





1401 Sixth Avenue
Huntington, West Virginia 25701

304.697.4990 (T)
304.697.4991 (F)

eta@etarch.com
etarch.com





CONTENTS

- 01 COVER LETTER
- 02 FIRM PROFILE & STAFFING PLAN
- 03 RELEVANT EXPERIENCE
- 04 PROJECT APPROACH
- 05 REFERENCES
- 06 RESUMES
- 07 ATTACHMENTS



COVER LETTER





August 13, 2025

Hanna Kroeger
Accounting Coordinator, West Virginia Department of Tourism
Hanna.E.Kroeger@wv.gov

re: 26-TOUREOI-1 - Architectural and Engineering Services for Culture Center Roofing Project

Dear Ms. Kroeger:

Enclosed for your consideration is Edward Tucker Architects' Expression of Interest to provide architectural and engineering services to the WV Department of Tourism and Culture Center. We are poised to put our experience and expertise to work with you on this project. We would welcome the opportunity to establish a relationship with you and your team to deliver this exciting project.

Edward Tucker Architects is celebrating 28 years of architectural practice this year, with a heritage of architectural practice in West Virginia dating back to 1910. Our staff are dedicated to the growth and development of West Virginia, as it is our home. We are based in Huntington and currently are designing and administering construction for projects throughout the southern part of the state.

Our firm would function as the Architect of Record for the project, and I will serve as the Principal in Charge and primary point of contact. If required, our firm has collected an extensive network of consulting engineers that can be brought into the project if required.

We believe the enclosed qualifications will illustrate that we are the most qualified and capable firm to assist the Department of Tourism in this effort. We have extensive experience as a team with projects of similar size and complexity and have demonstrated many times our specific expertise in delivering projects both on time and within budget, including navigating regulatory reviews, bidding, and construction administration. Our references should confirm this, and we encourage you to reach out to them.

We hope to be granted an interview to discuss with you firsthand our commitment to this endeavor.

Sincerely,

EDWARD TUCKER ARCHITECTS, INC.

A handwritten signature in black ink that reads "phoebe p. randolph". The signature is written in a cursive, lowercase style.

Phoebe Patton Randolph, AIA, LEED AP BD+C

FIRM PROFILE &
STAFFING PLAN



FIRM PROFILE

Our firm's reputation was established through high quality design & service delivered by our talented, accomplished professionals.



Edward Tucker Architects, Inc. (ETA) is a full-service firm located in Huntington, West Virginia with a heritage dating back to 1910. We provide feasibility & planning services, architecture, interiors and contract administration. Our award-winning, multi-disciplinary staff has expertise in a wide range of facility types for valued public and private clients across the region, including health care, higher education, K-12 academic, industrial, research laboratories, museums, churches, libraries, civic buildings and private commercial projects.

The foundation of our firm is the relationships we build with our clients. Our attention to detail, level of service, and the added value we bring to each project has resulted in many loyal, repeat clients. By respecting each project's unique constraints and opportunities, we provide innovative, responsive, and beautiful architectural design solutions.

Founding principal, Edward Tucker, FAIA, has built a culture of inclusiveness and collaboration since the firm was founded in 1996. The firm includes five architects who are supported by architectural interns, two interior designers, and office administration. Every person in the firm contributes their creativity, knowledge, and expertise to projects. We are a small, women-owned business. Phoebe Patton Randolph, AIA serves as the president of the firm.

We enjoy collaborating with other design firms and maintain long-standing relationships with a network of accomplished consultants in the fields of civil, structural, mechanical engineering, as well as plumbing and electrical design. We stay completely and continually engaged – from schematic design through construction – ensuring an intelligent, coordinated project experience.

Our firm has a history of commitment to community and economic development in the region where we practice, and where we have chosen to live and raise our families. We believe in the potential of our region, and are dedicated to serving as a resource for smart growth and development through community service.



STAFFING PLAN

The enclosed resumes and project experience information illustrate our qualifications. All project architects are licensed to practice in West Virginia. LEED certifications are indicated below.



EDWARD TUCKER ARCHITECTS, INC.

ARCHITECTURE

ETA STAFF ROLES & RESPONSIBILITIES

PHOEBE PATTON RANDOLPH, AIA, LEED AP BD+C - PRESIDENT, PRINCIPAL IN CHARGE
OWNER'S CONTACT PERSON - (304) 697-4990, PPR@ETARCH.COM

AMBER YOST, NCIDQ, IIDA
PRINCIPAL, INTERIOR DESIGN

ANGELA MAXWELL, AIA
SENIOR ARCHITECT

MATTHEW LUCK, ASSOCIATE AIA
ARCHITECTURAL ASSOCIATE

KYLAN DARNELL, ASSOCIATE AIA
ARCHITECTURAL ASSOCIATE





”

You spent many hours listening to what the faculty needed to deliver quality experiences to our students, and you took that information and developed a very comprehensive program. Your design that came from the program is beautiful and functional, and the Visual Arts Center is a masterpiece.

Our partnership with your firm was a rewarding experience for all of us at Marshall University. Thank you!

”

Dan Van Horn
*Former Dean, College of Arts &
Media, Marshall University*

RELEVANT
EXPERIENCE



STEPHEN J.
KOPP HALL



CIVIC / CULTURAL

Cabell County Courthouse Clock Tower Restoration

CABELL COUNTY, WEST VIRGINIA



Edward Tucker Architects were asked to evaluate the condition of the historically significant, 90-foot tall courthouse clock tower.

Extensive investigation revealed significant deterioration of the ornamental metal and stone. The architect completed detailed documentation of areas needing attending, working closely with the WV State Historic Preservation Office to coordinate historic preservation considerations and requirements.

The scope of work for the project included constructing scaffolding, selective demolition, reconstruction of brick masonry corbels, carpentry, flashing, rehabilitation of the stone, repair of the copper domes, cleaning and sealing the stone, and painting exposed wood and primed metal surfaces.



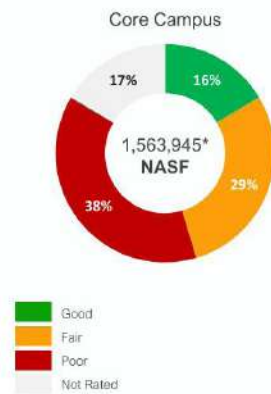
PROJECT NAME	SYSTEM	AREA
ROBERT W. COON PROFESSIONAL EDUCATION BUILDING Marshall University Wayne County, WV	Roof system removal and installation of new Single Ply Membrane. New taper board insulation to create drainage, roof drain and overflow drain adjustments. Project included interior renovations for new School of Pharmacy.	20,000 SF
CABELL COUNTY COURTHOUSE Huntington, WV	(Historic Structure) BUR tear-off, new Single Ply Membrane, limited copper shapes. Project involved removal of ventilators and outdated rooftop equipment.	19,000 SF
DOUGLASS CENTRE (FORMER DOUGLASS HIGH SCHOOL) Huntington, WV	(Historic Structure) BUR tear-off, new Single Ply Membrane. Project required creating slope utilized tapered insulation throughout	26,000 SF
KEITH ALBEE THEATER Huntington, WV	(Historic Structure) New roof is a combination of single ply membrane, asphalt shingles and terra cotta tiles and coping. Removal of existing stagehouse ventilators and installation of new ventilators and infill structure required.	23,000 SF
MARSHALL HEALTH NETWORK ARENA Huntington, WV	Roof system removal and installation of a new, fully adhered EPDM roof membrane system over polyisocyanurate. Included installation Additional complete mechanical and structural rigging upgrades were conducted simultaneously.	166,000 SF

PROJECT NAME	SYSTEM	AREA
TRI-STATE AIRPORT TERMINAL BUILDING Wayne County, WV	BUR tear-off, new Single Ply Membrane. Project required addition of new roof drains and roof slope utilizing tapered insulation throughout, all above occupied spaces.	33,000 SF
MEMORIAL FIELD HOUSE Huntington, WV	Single Ply Membrane over tapered insulation at perimeter; reapplication of membrane coating on sloped metal roof system.	39,000 SF
CAMPBELL ELEMENTARY SCHOOL Greenup County, KY	Single Ply Membrane on recovery board over existing membrane; tectum and metal deck substrate.	22,000 SF
MARSHALL UNIVERSITY FORENSIC SCIENCE CENTER, PHASE 1 Huntington, WV	BUR tear-off, new Single Ply Membrane over tapered insulation	8,000 SF
CABELL COUNTY LIBRARY - PARKING DECK Huntington, WV	Traffic bearing waterproofing system on existing concrete deck. Slope created utilizing special filler prep coats.	13,000 SF

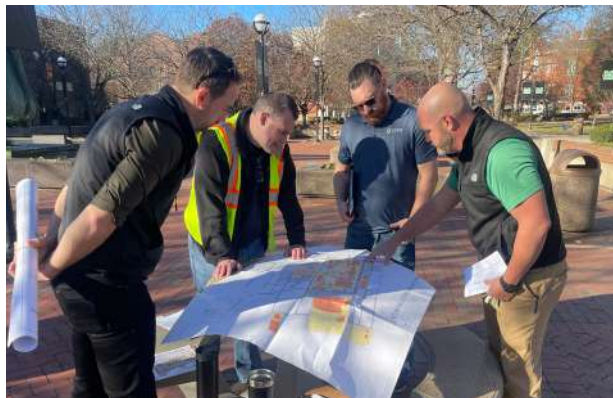
Marshall University
2023 Campus
Master Plan

HUNTINGTON, WEST VIRGINIA

Current State Context: Building Condition Ratings



* Excludes Laidley Hall, Public Safety
& Residential Housing



Core Campus Priority Project: Flooding Interventions



ETA worked closely with lead planners Ayers Saint Gross throughout the campus planning process to provide local perspective, as well as coordinating field work for facility condition assessments and flooding assessments.

ETA and CMTA worked together with Marshall's facilities and maintenance staff to complete facility condition and deferred maintenance assessments for 17 buildings on the university's main and satellite campuses. This work involved a detailed evaluation of each facility to score them relative to 20 categories.

ETA, GAI and CMTA worked closely with Marshall's Director of Physical Plant to evaluate stormwater flooding impacts on the main campus. The team worked to compile and digitize existing mapping collected from multiple sources, including the Huntington Sanitary Board and ETA archives documenting existing stormwater infrastructure dating back to the 1920's.

The team worked together to develop strategies to address critical stormwater infrastructure needs through a phased approach.

CIVIC / CULTURAL

Wayne County Courthouse

WAYNE COUNTY, WEST VIRGINIA



ETA worked with Wayne County to restore the historic 1923 Courthouse Clock Tower.

After sustaining continued water damage over the years, the Wayne County Courthouse Clock Tower was in disrepair. Utilizing a matching grant provided by the State of West Virginia, Wayne County engaged ETA to lead the restoration of the community's focal point.

The scope of work for the project included repair of damaged structural framing, cupola restoration, finish replacement, replacement of the interior access ladder and platform system, and rehabilitation of historic clock faces.



PUBLIC/INTERIOR
RENOVATION

Mountain Health Arena

HUNTINGTON, WEST VIRGINIA



Marshall Health Network Arena is a vibrant performance venue and a cornerstone of the downtown business district in Huntington, West Virginia. The circa 1980 structure was in need of attention to deferred maintenance and needed a refreshed image to promote itself as an attractive venue to artists and the public. The renovations to the building were approached in phases, with the first phase being painting the exterior metal panels. ETA brought in renowned artists Don Pendleton to collaborate on the color selections and design, and to

provide graphics reflecting elements of the region's identity. The second phase was a complete refresh of the convention center, with modern, bright colors and finishes. The third phase included reimagining the entry plaza to incorporate an exterior event space, tensile fabric shade structure, seating area with fire pit, interactive water feature, landscaping and lighting. At night, during events, the lobby is illuminated and the plaza becomes an extension of the interior space, creating a bustling, beautiful focal point for Huntington's downtown.

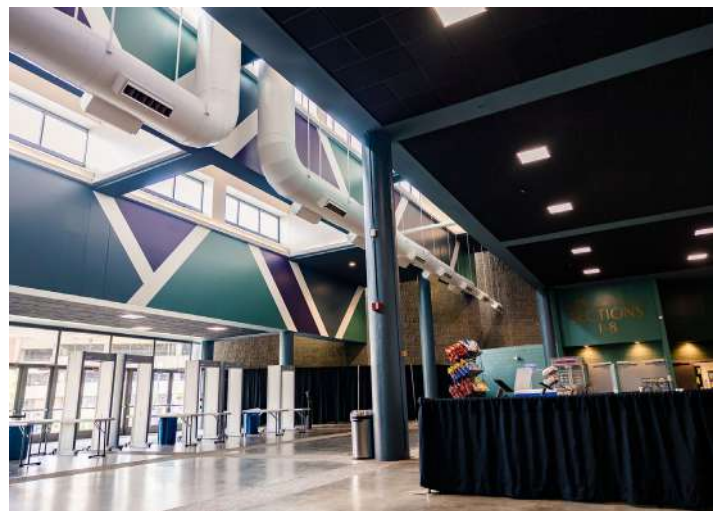
PUBLIC/INTERIOR
RENOVATION

Mountain Health Arena

HUNTINGTON, WEST VIRGINIA

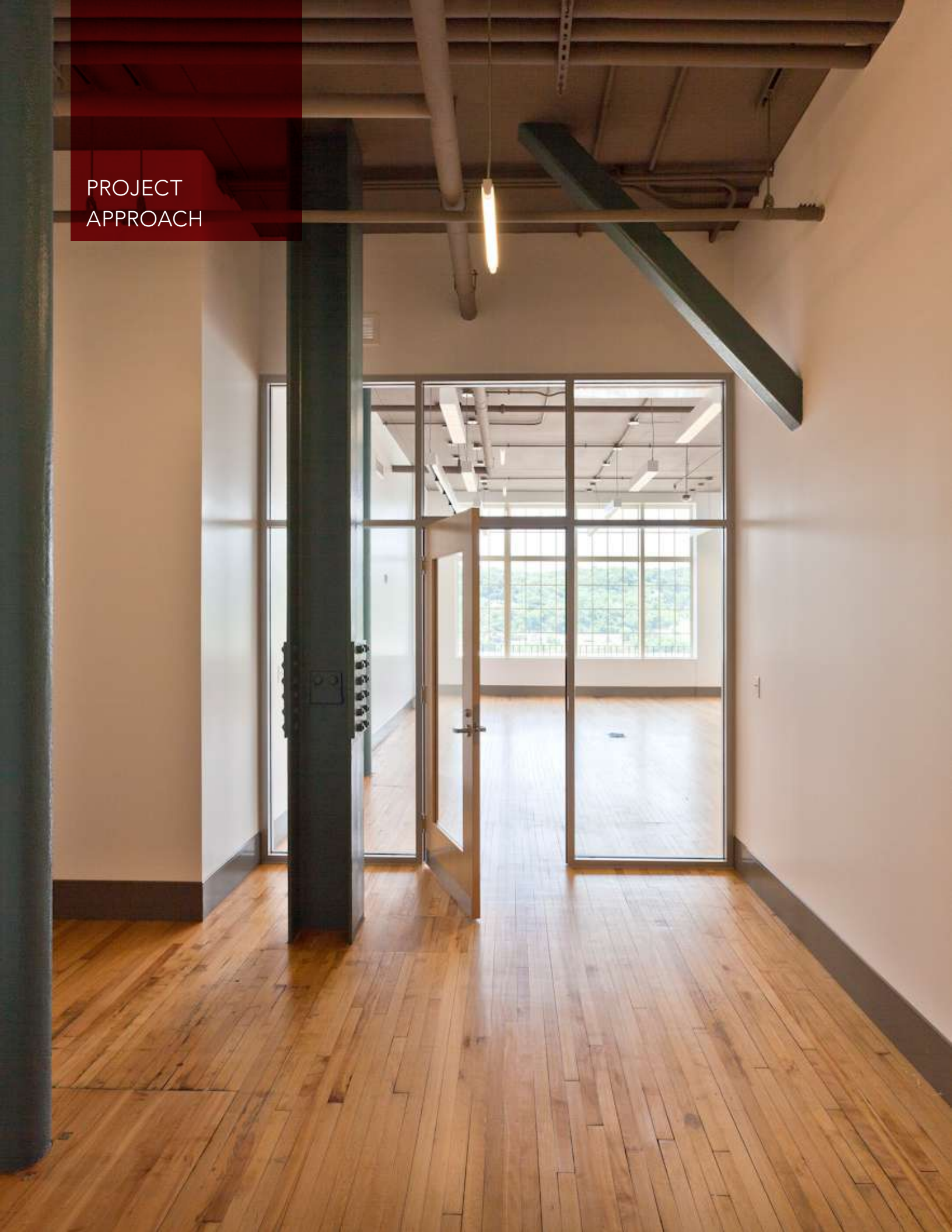


The renovations to the arena's interior introduced bright colors and modern finishes to the building, creating an inviting space for visiting artists and community members.



The interior renovations carried the blue color palette from the artwork on the exterior plaza into the walls and accents. The bold colors brighten the area, complimenting the wood signage indicating the newly renovated concession stands and entrances to the arena space. The renovations have created a fresh space for the hub of downtown Huntington to host a wide variety of performances and community events.

PROJECT
APPROACH



Facility Condition Analysis

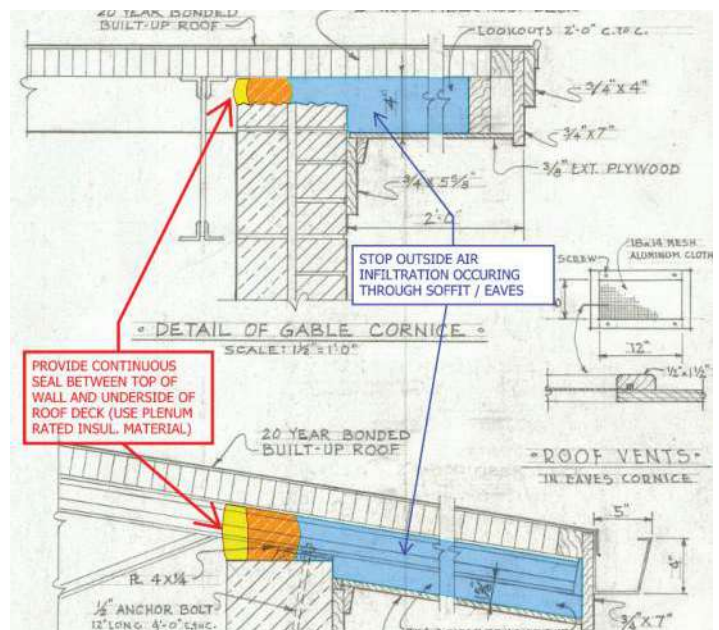
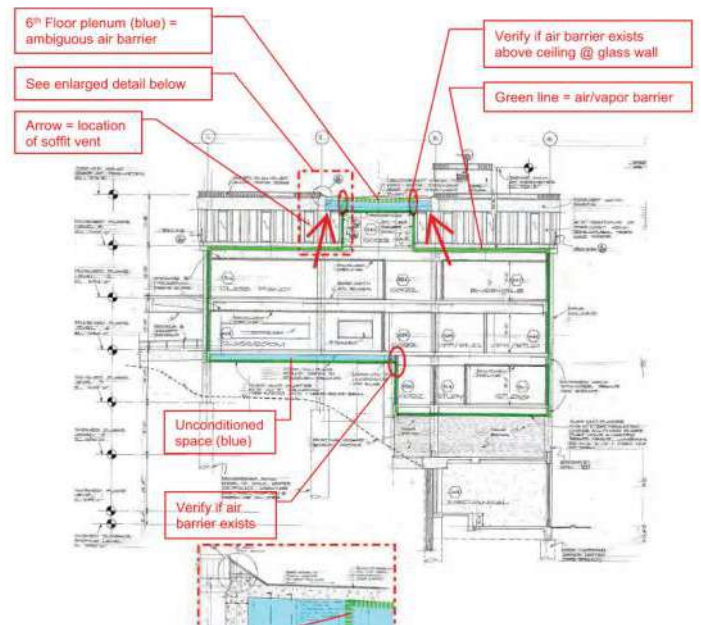
Existing condition surveys typically precede renovations, and serve to document facility problems, identify a strategy and scope to achieve the proposed use, and quantify the investment needed to accomplish the goals for the project.

Edward Tucker Architects has performed dozens of Facility Condition Surveys for a variety of clients and project types.

Because so many of our projects involve the rehabilitation of existing facilities, we have become well versed in the analysis and evaluation processes associated with building performance, material deterioration, diagnostics, and intervention.

A sampling of clients include:

- Marshall University
- West Virginia State University
- Ohio University
- City of Huntington, WV
- River City Properties
- Cabell Huntington Hospital
- Logan Corporation
- Raceland-Worthington School District
- Wayne County, WV Commission



CORE VALUES

We believe that innovation is the key to progress. In the right hands, well-designed buildings have the power to change lives.

MOTIVATING PEOPLE FOR THE LONG TERM. CREATING A GREAT PLACE TO WORK..

ETA has very little employee turnover, which is unusual in the design and construction industry. We hire critical thinkers who are energized by new knowledge, concepts, and techniques. Our firm culture emphasizes collaboration, mentoring, and exploration, and while we have extensive experience in some project types, we thrive on new challenges.

TEAMING FLEXIBILITY. ALIGNING EXPERTISE AND THE BEST PEOPLE.

Based on each project's size, type, and complexity, we carefully select the best and most appropriate engineering and consultant team members. Understanding that some projects need design consultants with specific experience, we will partner with other firms when appropriate for optimum results.

OPEN COMMUNICATION. "FOR THE COMPANY DIRECTORY, PLEASE DIAL ..."

We strive to ensure that a real person will always take your call so clients can expect responsive, accessible, and attentive people, not message services. We offer timely, relevant responses to our clients' needs, usually in less than 24 hours. One of our two principals is always available to answer questions, listen to concerns, and discuss projects.

ETA conducts client and project group meetings to explore and identify project design needs. Following design reviews, we share a written record of decisions with team members to ensure that everyone is consistently informed. This communication process ensures a complete record of goals and decisions to guide and evaluate project outcomes.

RESPONSIBLE COORDINATION. GETTING IT RIGHT THE FIRST TIME.

ETA's office structure is much more "horizontal" than typical design firms. Our office culture encourages collaboration at all levels, from exploring design solutions to detailing construction documents. While each team member is responsible for specific elements of work, all team members work together and share responsibility for a project's success. Through close communication and technical expertise, our employees create drawings and specifications that provide a cohesive design for each project site, structure, and systems to guide them successfully from design through construction.

CONSISTENT LEADERSHIP FROM BEGINNING TO END. WHEN TEAM MEMBERS CHANGE, PROJECT QUALITY SUFFERS.

At ETA, once a leadership team is established, it stays in place – from concept through construction to occupancy. Staff may be added to the team, should the project require it, but the core team of principal and project architect will not change. This continuity ensures good communication to maintain the project vision.

SPECIALIZED APPROACH: NO TWO PROJECTS – OR CLIENTS – ARE ALIKE. EACH PROJECT DESERVES A UNIQUE, TAILORED DESIGN SUITED TO ITS CIRCUMSTANCES.

When a firm says it has designed dozens of banks, schools, or clinics, it can mean that the same prototypical designs are being used over and over. At ETA, we thoroughly examine each project's site, context, budget, parameters, and other client needs. These factors define the work to be done. We study design exemplars and conduct research of, or travel to, recently completed facilities to ensure best practices for each project. This pre-design exploration helps establish a common language leading to desirable outcomes.



AIM WELL.

TOO MANY PROJECTS FOLLOW THE ALL TOO FAMILIAR PATTERN OF “READY – FIRE – AIM.”

ETA works diligently with our clients to question, explore, research, and ultimately reach consensus on project goals and objectives prior to beginning design work. The alignment of goals, planning, budgeting, discovering issues to be resolved, prioritizing, and scheduling all contribute to the pre-design phase. When the target is well defined before the design work begins, a “well aimed” design is much more likely to hit the target.

DOING THE RIGHT THING, ASKING THE RIGHT QUESTIONS.

IF THE ARCHITECT DOES ALL THE TALKING, HOW CAN THEY LEARN ABOUT YOU AND YOUR PROJECT?

ETA listens to our clients and other stakeholders. We investigate and obtain objective data to provide informed and insightful options or solutions. We resist saying we can’t do something until all options have been explored, and we always look for ways to do the right thing for the long term. We consistently work to solve problems and create a sustainable project with a lasting sense of identity.

CONSTRUCTION: STAYING ON TARGET TO THE END.

WHY THE ARCHITECT’S LEADERSHIP DURING CONSTRUCTION IS VITAL.

ETA believes the project architect is the best person to perform construction administration, because they are most intimately familiar with the project’s overall goals. On-site project meetings are typically held every two weeks to monitor progress, address questions, and resolve issues. Meetings are documented with detailed notes that include action items. Our specific protocols for construction administration have earned the respect of both our clients and the construction community. We routinely hold our errors and omissions to less than one percent (< 1%) of construction costs.

BUDGET, QUALITY LEVEL AND SCHEDULE.

WILL THE PROJECT COME IN ON BUDGET?

ETA works with clients to establish accurate funding and budget scenarios based on three key components: budget, quality, and schedule. We provide construction estimates using our own project histories, plus state and national databases. We clarify construction vs. total project budgets. For traditional design-bid-build projects, our database of actual construction costs helps us refine construction documents to stay within budget. We work closely with contractors and subcontractors to stay in tune with bidding and cost climate forecasts in the project’s geographical area.



REFERENCES



REFERENCES

The relationships that we build with our clients are the most valued part of the work that we do.

Coalfield Development Corporation

NICK GUERTIN, CHIEF DESIGN & CONSTRUCTION OFFICER
(304) 528-5700
NGUERTIN@COALFIELD-DEVELOPMENT.ORG

City of Huntington

CATHY BURNS, PLANNING & DEVELOPMENT
(304) 696-5540 EXT. 2026
BURNSC@HUNTINGTONWV.GOV

Marshall University

BRANDI JACOBS-JONES, VP OF OPERATIONS
(304) 691-1712
JACOBS2@MARSHALL.EDU

West Virginia School of Osteopathic Medicine

DR. LINDA BOYD, VP OF ACADEMIC AFFAIRS, CHIEF ACADEMIC OFFICER
(304) 647-6220
LBOYD@OSTEO.WVSOM.EDU

Bluefield State University

DR. DARRIN MARTIN, PRESIDENT
(304) 327-4030
DMARTIN@BLUEFIELDSTATE.EDU

West Virginia State University

HANNAH PAYNE, DIRECTOR OF 1890 LAND-GRANT STRATEGIC OPERATIONS
(304) 529-4952
HANNAH.PAYNE@WVSTATEU.EDU

Marshall University Joan C. Edwards School of Medicine

BETH HAMMERS, CHIEF OF INTEGRATION & EXTERNAL AFFAIRS
(304) 691-1712
BHAMMERS@MARSHALL.EDU

Mountwest Community and Technical College

JENNIFER PORTER, DIRECTOR OF GRANTS & PROJECTS
(304) 710-3527
MARTIN190@MCTC.EDU

Cabell County Public Library

BREANA BOWEN, DIRECTOR
(606) 408-0517
BREANA.BOWEN@CABELLCOUNTYLIB.ORG

RESUMES



Phoebe Patton
Randolph
AIA, LEED AP BD+C
Principal
Architecture



Phoebe Patton Randolph oversees the design and delivery of the firm's projects including healthcare, higher education, K-12, library, museum, civic and essential services. She applies her knowledge of building science, adaptive reuse, historic preservation, technical integration, and construction to the firm's work.

BIOGRAPHY

Graduating from high school at the age of 16, Phoebe attended the University of Tennessee, Knoxville's College of Architecture and Design and received her Bachelor of Architecture degree at the age of 21. She returned home in 2003 and has been committed to the revitalization of Huntington and the surrounding region ever since. Through her work at Edward Tucker Architects, as well as extensive involvement in the community as a volunteer, Phoebe has developed strong connections to state and local agencies, organizations and community leaders. Elected by her peers as the first female president of the West Virginia Chapter of the American Institute of Architects in 2016, her work has been recognized through multiple design awards.

EDUCATION

University of Tennessee

Knoxville, Tennessee

Bachelor of Architecture, 2000

Faculty Design Award – 2000

School of Architecture Letter of Excellence – 2000

Krakow Polytechnic University

Krakow Poland

Architecture and Urban Design, Spring Semester 1999

Pratt Institute

Brooklyn, New York

Pre-College summer program in Architecture - 1994

REGISTRATIONS

National Council of Architectural Registration Boards

West Virginia

Green Building Certification Institute

LEED AP BD+C

PROFESSIONAL AFFILIATIONS

American Institute of Architects, West Virginia

Chapter

President 2016-2018

Scholarship Committee (Current Chair) 2009-Present

PROJECT EXPERIENCE

West Virginia School of Osteopathic Medicine

Renovations and Addition to the Frederic W. Smith Science Building, In Design

Marshall University School of Medicine

Teays Valley Medical Center, Scott Depot, WV, 2017

Robert C. Byrd Rural Health Clinic, Chapmanville, WV, 2012

2013 Merit Award for Achievement in Architecture - AIA West Virginia

Erma Ora Byrd Clinical Education & Outreach Center, 2007

Bluefield State University

Allied Health College, Bluefield, WV, 2024

Phased Renovation - In Construction

Marshall University

2023 Campus Plan with Ayers Saint Gross

Visual Arts Center, Downtown Huntington, WV, 2014

2015 Honor Award for Excellence in Design - AIA West Virginia

School of Pharmacy at the Robert Coon MEB, 2012

Signet Real Estate

Marshall University Stephen J. Kopp School of Pharmacy, 2019, with Perkins + Will

Cabell County Public Libraries

A New Library for Barboursville, 2022

2022 Merit Award for Excellence in Sustainable Design - AIA West Virginia

Cabell County Schools

A New Elementary School for Davis Creek, 2024

Renovations to Hite Saunders Elementary, 2023

Renovations to Nichols Elementary, 2023

A New Elementary School for Highlawn, 2020

2021 Merit Award for Excellence in Design - AIA West Virginia

Huntington Museum of Art

Isabelle Gwynn and Robert Daine Gallery Addition, Huntington, WV, Completed 2010

2011 Merit Award for Excellence in Design - AIA West Virginia



Amber D. Yost,
NCIDQ, IIDA
Principal, Interior
Design



Amber Yost leads the firm's interior design projects, specializing in higher education, healthcare, laboratories, government, and K-12 education. Her work reflects the firm's commitment to cohesive, integrated projects that seamlessly blend interior design and architecture, ensuring that every space is thoughtfully tailored to the needs of its users. Through her collaborative approach, Amber helps deliver innovative environments that support both the people who inhabit them and the broader communities they serve.

BIOGRAPHY

After earning a Bachelor's degree in Interior Design from West Virginia University and gaining experience in furniture design and space planning, Amber began her career at Edward Tucker Architects in 2017. It was here that she developed a deeper understanding of how interior spaces can impact human behavior and overall well-being. Through hands-on experience and collaboration with the team, she honed her skills and gained the knowledge necessary to earn her NCIDQ certification. Driven by a passion for innovation and continuous learning, Amber focuses on creating spaces that are not only functional but also enhance the experiences of those who use them. Outside of her professional life, she enjoys spending time with her husband, James, and their son, Oliver, as well as throwing pottery, reading, and traveling with friends.

EDUCATION

West Virginia University

Morgantown, WV

Bachelor of Science, Interior Design - 2011

University of Hertfordshire

Hatfield, England

Contemporary Applied Arts - 2010 Spring Semester

CURRENT & PAST COMMUNITY INVOLVEMENT

Leadership Huntington Class of 2024-2025

West Virginia Symphony League

Board Member, Secretary

YWCA Girl's Night Out Decor Committee

Charleston Main Streets Volunteer

WVU Sigma Alpha Iota Board Member, Editor

REGISTRATIONS

Council for Interior Design Qualifications

NCIDQ Certified Interior Design Professional

PROFESSIONAL AFFILIATIONS

International Interior Design Association

IIDA National, Ohio_Kentucky

PROJECT INTERIORS EXPERIENCE

West Virginia School of Osteopathic Medicine

Renovations and Addition to the Frederic W. Smith Science Building, In Design

Cabell County Schools

Cabell Midland High School Cafeteria Expansion, In Design

A New Elementary School for Davis Creek, 2024

Renovations to Hite Saunders Elementary, 2023

Renovations to Nichols Elementary, 2023

A New Elementary School for Highlawn, 2020

2021 Merit Award for Excellence in Design - AIA West Virginia

City of Huntington, West Virginia

Mayor Joseph L. Williams Jr. Fire Station #2

Compass First Responders Wellness Center

City Hall Renovations

Cabell Huntington Hospital

A New Medical Office Building

Perioperative Clinic & Registration

Pediatric Oncology Renovation, Edwards Comprehensive Cancer Center

Kid Friendly Campus - Integration of child-friendly finishes, furniture, casework, graphics for the Children's Hospital

Wound Care Renovation

Hospital to Garage Corridor & Gift Shop

Bluefield State University

Medical Education Center, 2024



Angela Maxwell
AIA, NCARB
Senior Architect



A graduate of California Polytechnic State University in San Luis Obispo, with a degree in Architecture and Environmental Design, Angela participated in international study experiences in Switzerland and at the Bauhaus School in Dessau during her time at Cal Poly. With a background in affordable housing in Maryland, Angela uses her experience to serve Huntington's community and commercial development. Angela enjoys the outdoors and is regularly found at the New River Gorge, Red River Gorge, or one of the many local parks.

EDUCATION

California Polytechnic State University
San Luis Obispo, CA
Architecture and Environmental Design
Bachelor of Architecture

Dessau Institute of Architecture
Independent Exchange Student, 2013-2014

Switzerland Study Abroad Program
Summer Student, 2013

PROFESSIONAL AFFILIATIONS

American Institute of Architects
West Virginia Chapter

REGISTRATIONS

**National Council of Architectural
Registration Boards**
West Virginia

PROFESSIONAL AFFILIATIONS

Little Victories Animal Shelter Board Member
Generation West Virginia Class of 2025-2026

PROFESSIONAL EXPERIENCE

West Virginia School of Osteopathic Medicine
Renovations and Addition to the Frederic W. Smith Science
Building, In Design

City of Huntington - Huntington, WV.
Mayor Joseph L. Williams Fire Station #2, 2023
Westmoreland Fire Station, In Design

Coalfield Development Corporation- Huntington, WV
Black Diamond Sustainable Development Logistics Hub, In
Construction

Pediatric Dentistry, PSC
A New Pediatric Dentistry, 2024
2024 Honor Award for Excellence in Architecture - AIA West Virginia

**Cabell County Community Services Organization-
Huntington, WV**
Bob Bailey Senior Wellness Center, 2024

Tri-State Life Care - Huntington, WV
Adult Day Care, 2024

Huntington Children's Museum - Huntington, WV
Huntington Children's Museum, 2024

Renew-All Cultural Wealth Hub- Huntington, WV
Renovations to 610 & 608 14th Street West



Matthew Luck Architectural Associate



Matthew Luck began interning at Edward Tucker Architects after his second year of undergraduate studies. Upon graduating, Matthew moved home to West Virginia to join ETA full-time as an Architectural Designer and pursue his full licensure.

BIOGRAPHY

Raised in Milton, West Virginia, Matthew attended the University of Tennessee for his Bachelor's of Architecture and graduated Summa Cum Laude in 2024. His undergraduate research "Placetaking and Place and Retaking" explored ideas of place and the urban landscape by reimagining restricted and underutilized interstitial suburban environments.

While in Tennessee, Matthew was heavily involved in his school and the greater Knoxville community. As president of the Theodorus Chapter of Alpha Rho Chi, a co-ed professional fraternity for architecture and the allied arts, Matthew led several volunteering efforts for the fraternity, leading to the Chapter winning the National Community Service Award and Matthew receiving the School of Architecture Alpha Rho Chi Award for Student Leadership. Independent of his work with Alpha Rho Chi, Matthew served as a Resident Assistant and as a Teaching Assistant for first and second year courses.

Outside of work, Matthew enjoys continuing his decade long practice of the violin and spending time with his dog, Willow.

EDUCATION

University of Tennessee

Knoxville, Tennessee

Bachelor of Architecture, 2024 Summa Cum Laude

UTK SoA Alpha Rho Chi Award for Student Leadership, 2024

AIA Middle Tennessee Student Design Award, First Place, 2022

University of Arkansas Rome Center

Rome, Italy

Architecture and Urban Design, Spring Semester 2023

PROJECT EXPERIENCE

City of Huntington

Marshall Health Network Arena Roof Replacement, In Construction

City Hall Auditorium Renovation, In Design

West Virginia School of Osteopathic Medicine

Renovations and Addition to the Frederic W. Smith Science Building, In Design

Marshall University

A New Signage & Wayfinding Plan, In Design

Huntington Junior College

Renovation to the College of Business, In Design

Opportunity Appalachia

Logan Rural Surgery Resident Housing, In Design

Huntington City Mission

Low Barrier Shelter, In Construction

Marshall University School of Medicine

Community Health Institute Planning

COMMUNITY INVOLVEMENT

Alpha Rho Chi, Theodorus Chapter

Worthy Architect, 2023-2024

Member, 2019-2024

Resident Assistant, University of Tennessee

2021-2022

Teaching Assistant, University of Tennessee

First-Year Representation

Second-Year Tectonics and Stereotomics

Second-Year Climate and Daylight Design



Kylan Darnell

Architectural Associate



Kylan Darnell began interning at Edward Tucker Architects in 2020 during her undergraduate studies. During her studies, Kylan developed a passion for urban design after seeing the direct effect it has on communities. She has a deep passion for projects that enhance communities not just visually, but that better the daily life of the people that occupy them.

BIOGRAPHY

A native of Wheelersburg, Ohio, Kylan holds a Bachelor of Science in Architecture from the University of Cincinnati and a Master of Architecture from Kent State University. She joined ETA as an intern in 2020 and has remained a part of the team ever since. Back in her hometown, Kylan is continuing her professional development as an Architectural Associate while actively pursuing licensure. Outside the office, Kylan enjoys spending time with her family and friends, painting, and continually redesigning the interior of her house.

EDUCATION

University of Cincinnati

Cincinnati, Ohio

Bachelor of Science in Architecture, 2023

Kent State University

Kent, Ohio

Master of Architecture, 2025

COMMUNITY INVOLVEMENT

Faculty Assistant

Kent State University

Volunteer

Los Angeles Mission, 2024

PROJECT EXPERIENCE

West Virginia School of Osteopathic Medicine

Renovations and Addition to the Frederic W. Smith Science Building, In Design

Midland Trail Veterinary Hospital

A New Midland Trail Veterinary Hospital, In Design

Opportunity Appalachia

Black Diamond Sustainable Logistics Hub - Building 3, 2025

Pediatric Dentistry, PSC

A New Pediatric Dentistry, 2024

City of Huntington

Marshall Health Network Arena Plaza Renovation, 2022

Huntington Internal Medicine Group

Life Safety Plans, 2021

Marshall Health Network

Marshall Health Network Facility Master Plan, 2021

Cabell County Schools

Geneva Kent Elementary School Development. 2021



ATTACHMENTS

